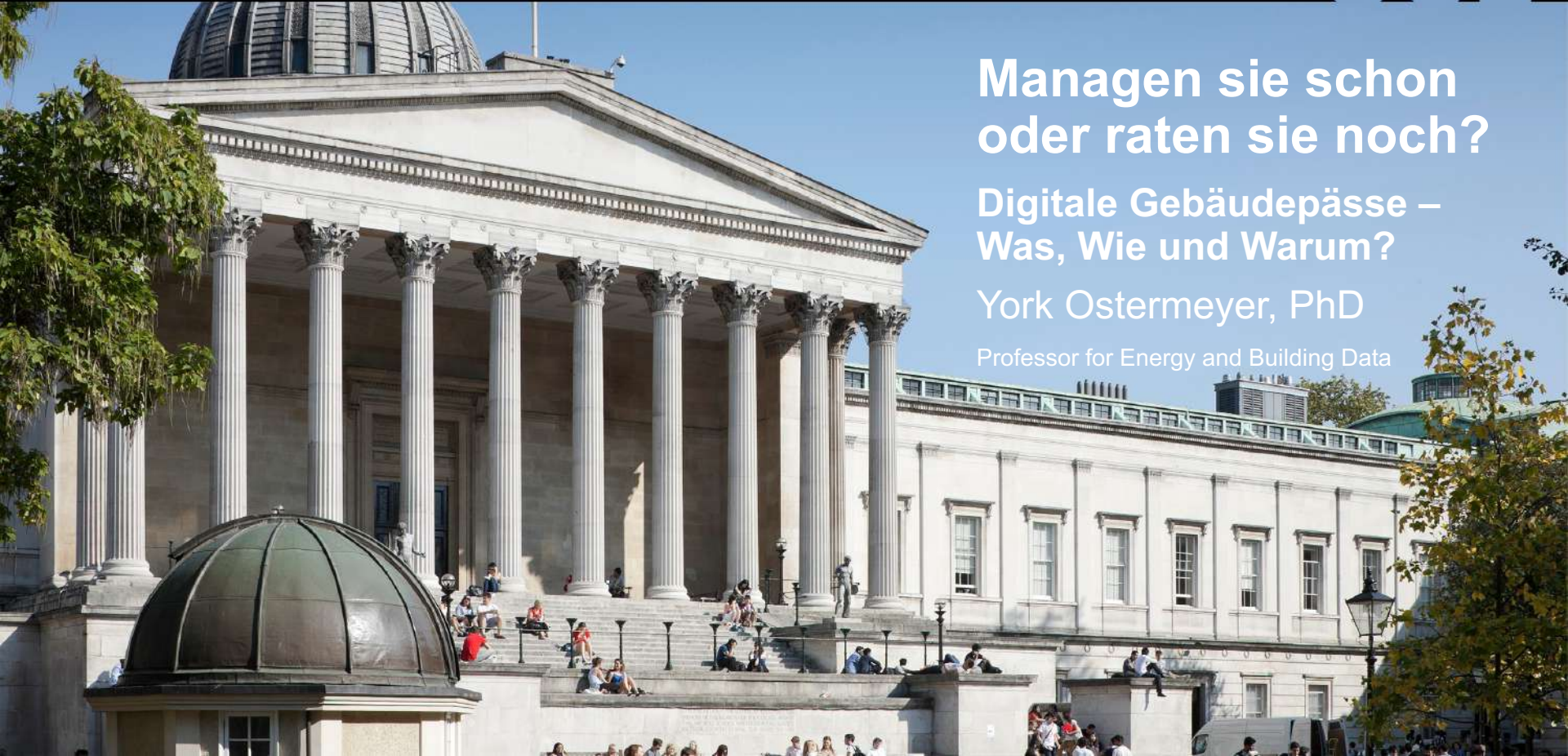


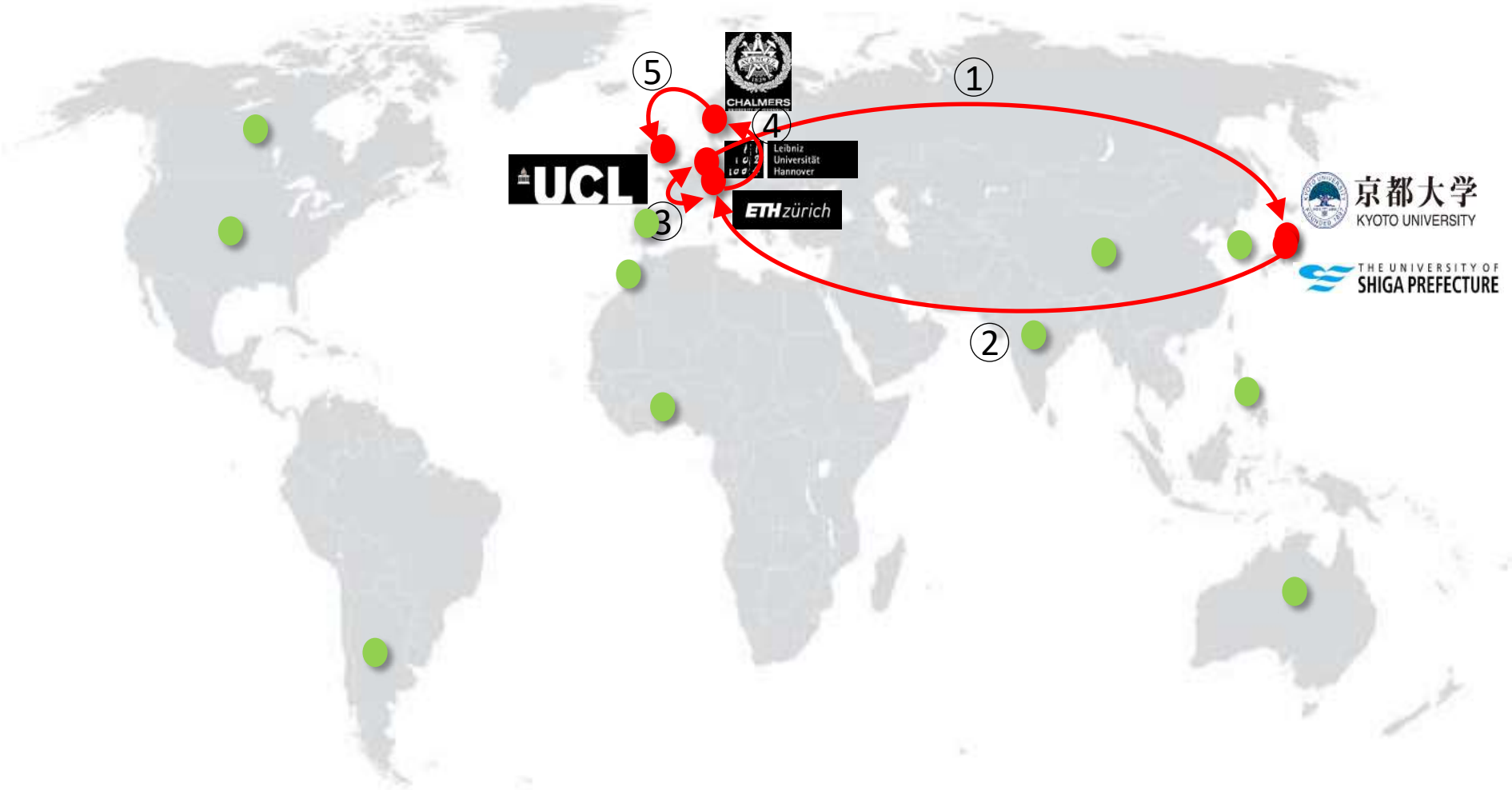
# Managen sie schon oder raten sie noch?

Digitale Gebäudepässe –  
Was, Wie und Warum?

York Ostermeyer, PhD

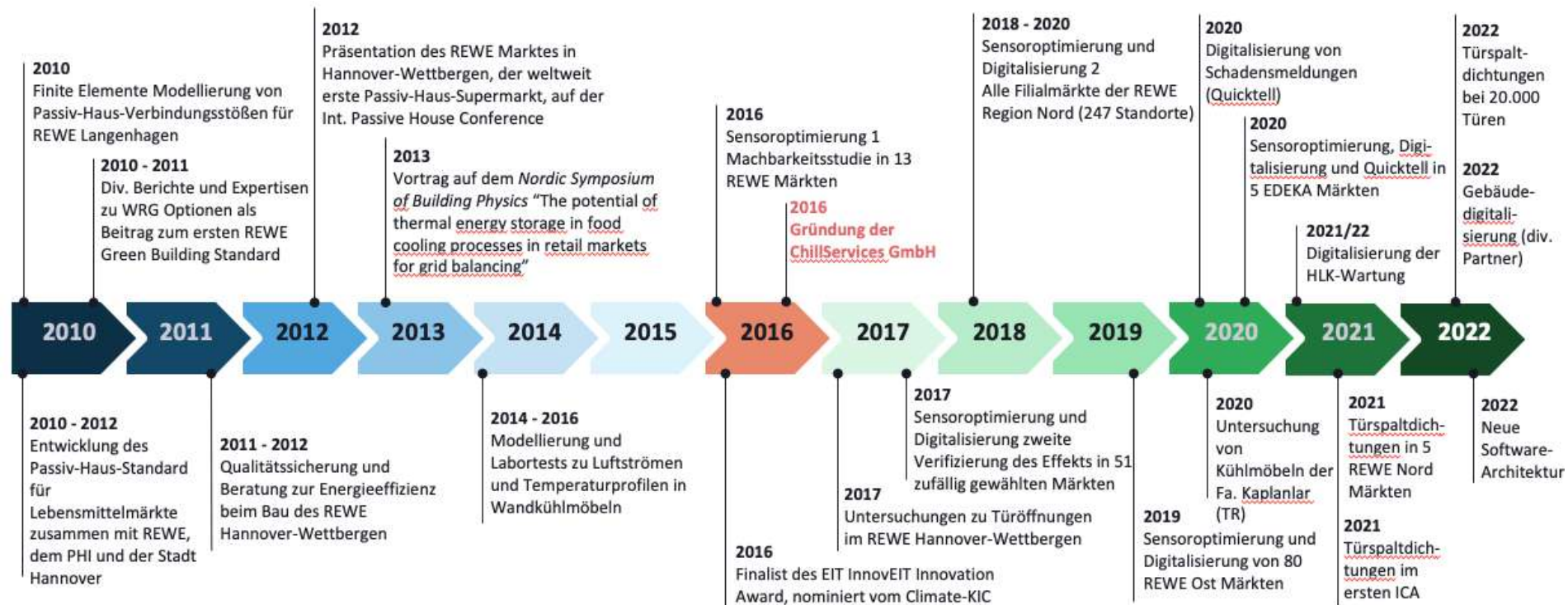
Professor for Energy and Building Data

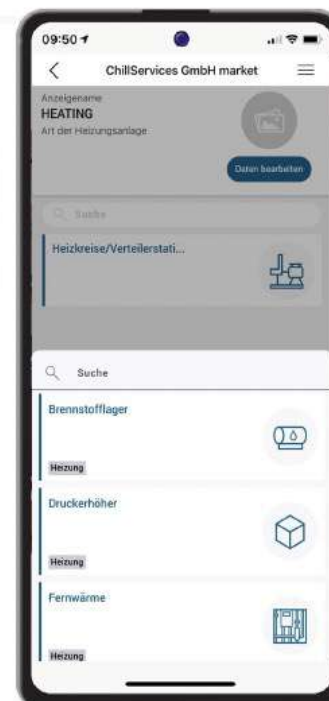
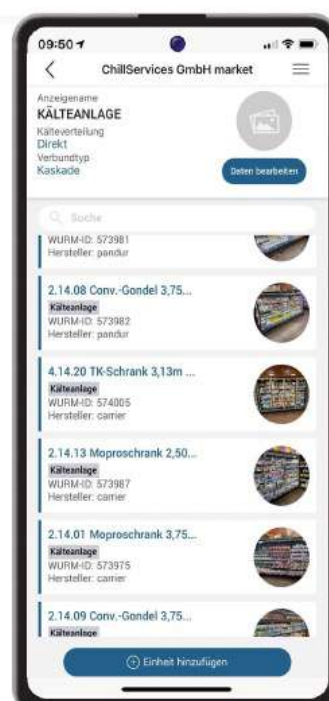
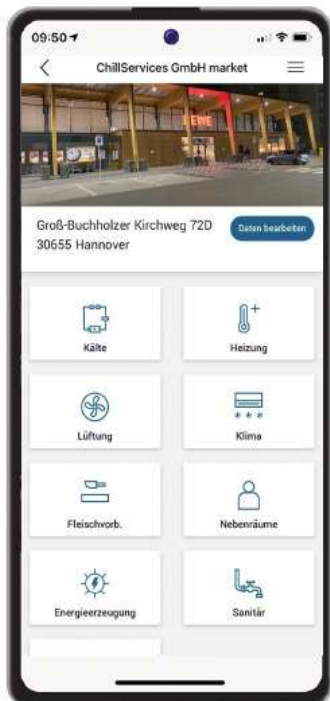
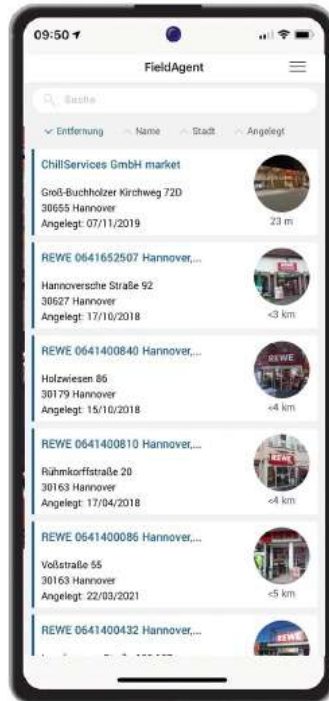














Baualtersklasse	Basis-Typen				
	EFH	RH	MFH	GMH	HH
A ... 1859					
B 1860 ... 1918					
C 1919 ... 1948					
D 1949 ... 1957					
E 1958 ... 1966					
F 1969 ... 1978					
G 1979 ... 1983					
H 1984 ... 1994					
I 1995 ... 2001					
J 2002 ... 2009					
K 2010 ... 2015					
L 2016 ...					

Sonderfälle	F/F	1969 ... 1978	Fertig- haus					
	NBL_D	1946 ... 1960	Neue Bundesländer industrieller Wohnungsbau					
	NBL_E	1961 ... 1969						
	NBL_F	1970 ... 1980						
	NBL_G	1981 ... 1985						
	NBL_H	1986 ... 1990						

Deutsche Wohngebäudetypologie  
 Beispielhafte Maßnahmen  
 zur Verbesserung der Energieeffizienz von typischen Wohngebäuden  
 – zweite erweiterte Auflage –  
 Tobias Loga, Britta Stein, Nikolaus Diefenbach, Rolf Born

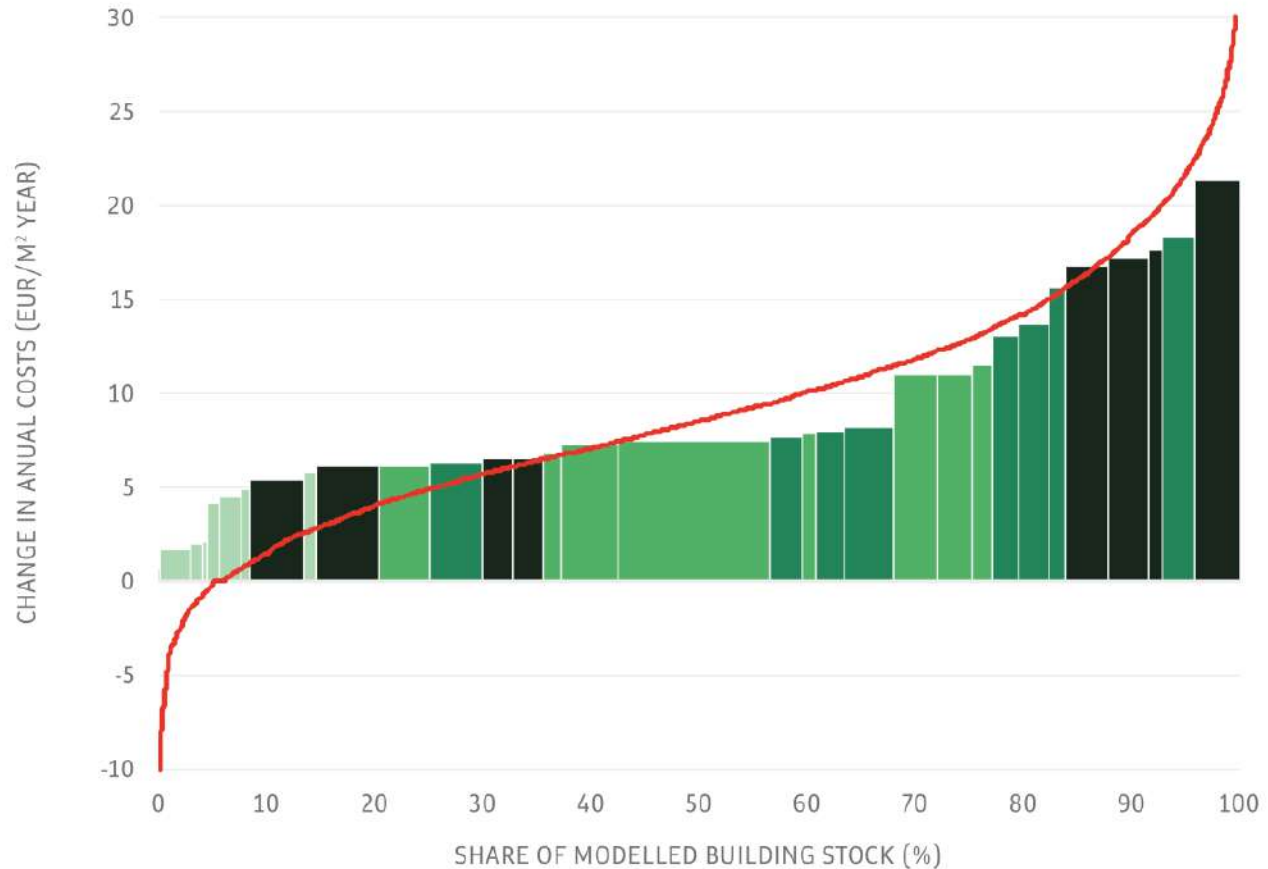


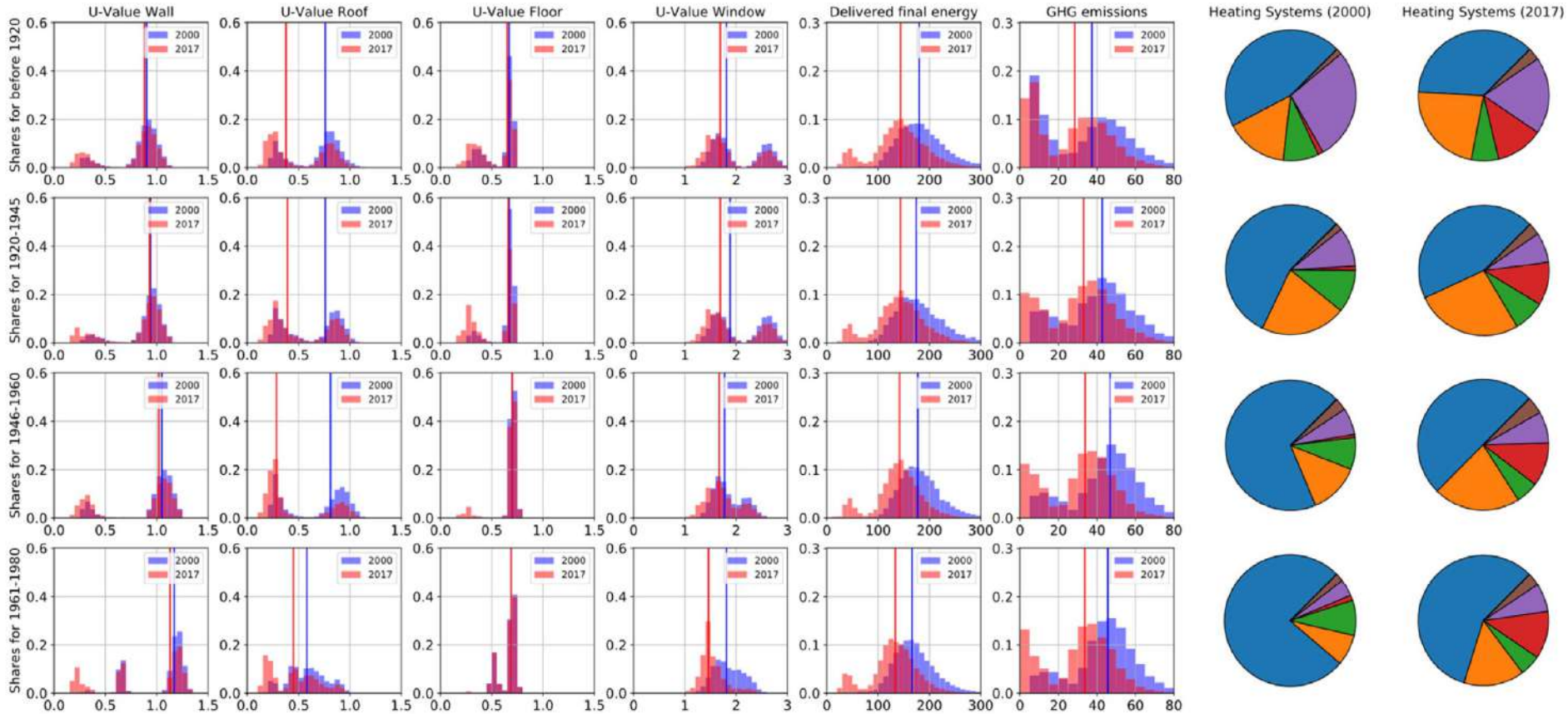
**9.3****EUR/m<sup>2</sup> year****Average change  
in annual costs****32**

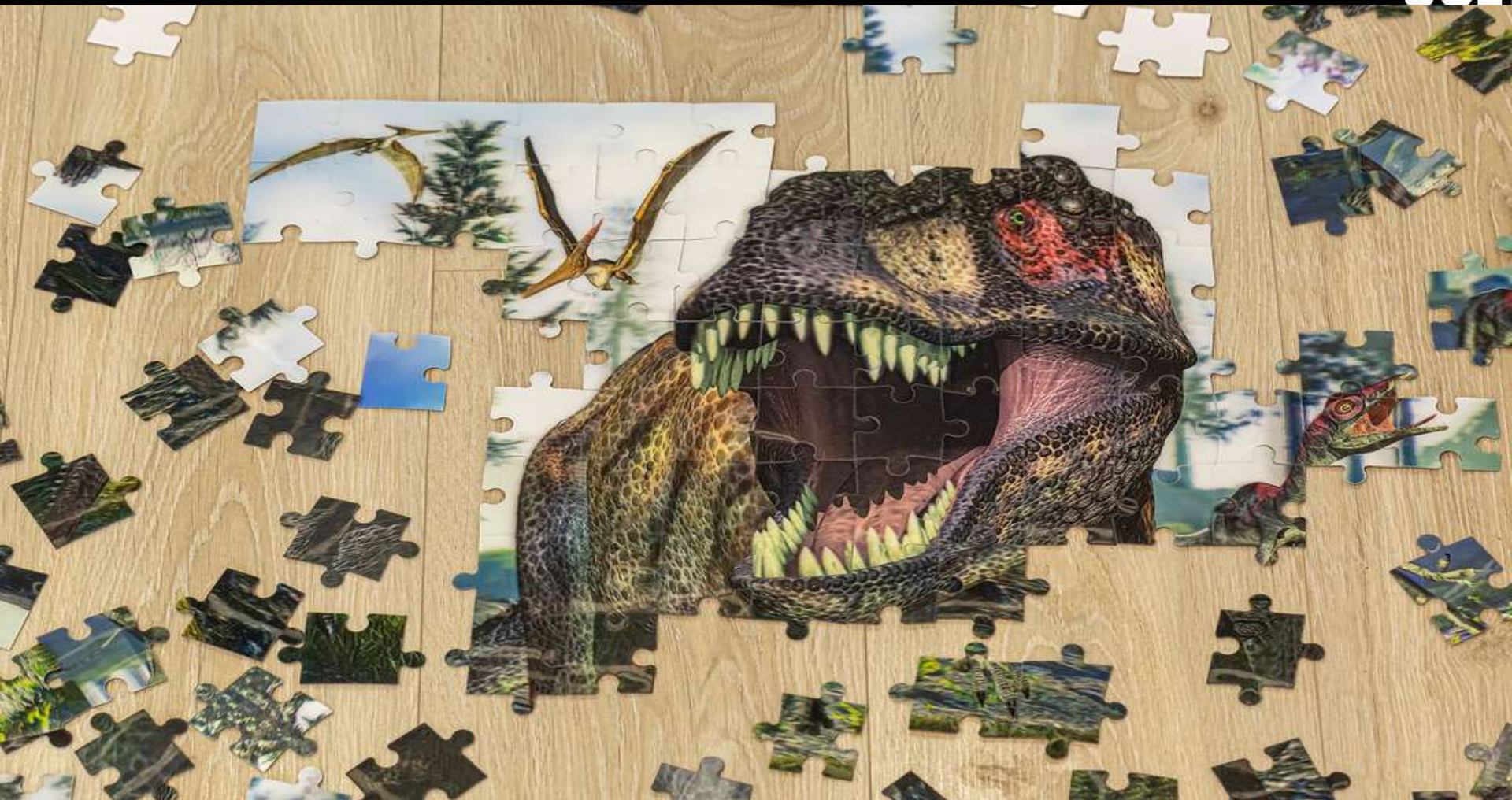
Typologies

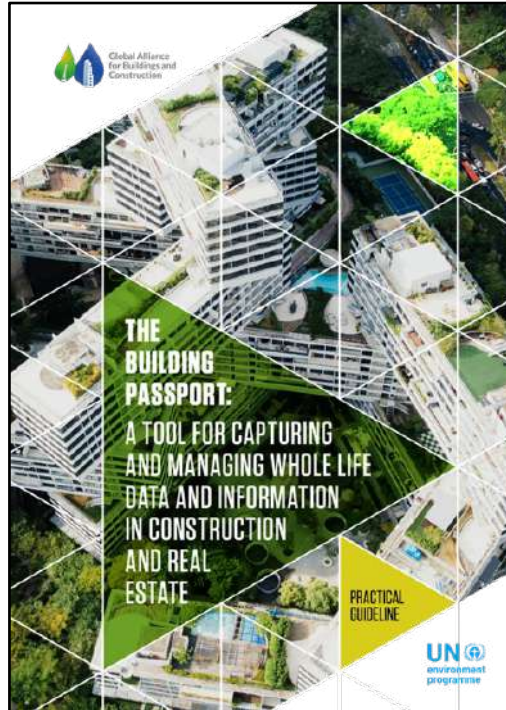
**10.000**Representative  
buildings**527M. m2**Total heated  
floor area

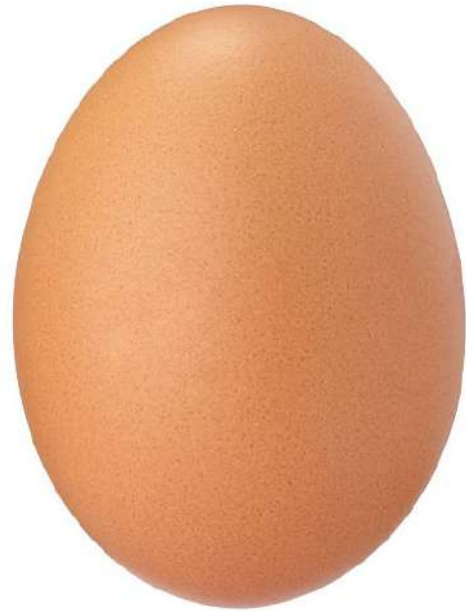
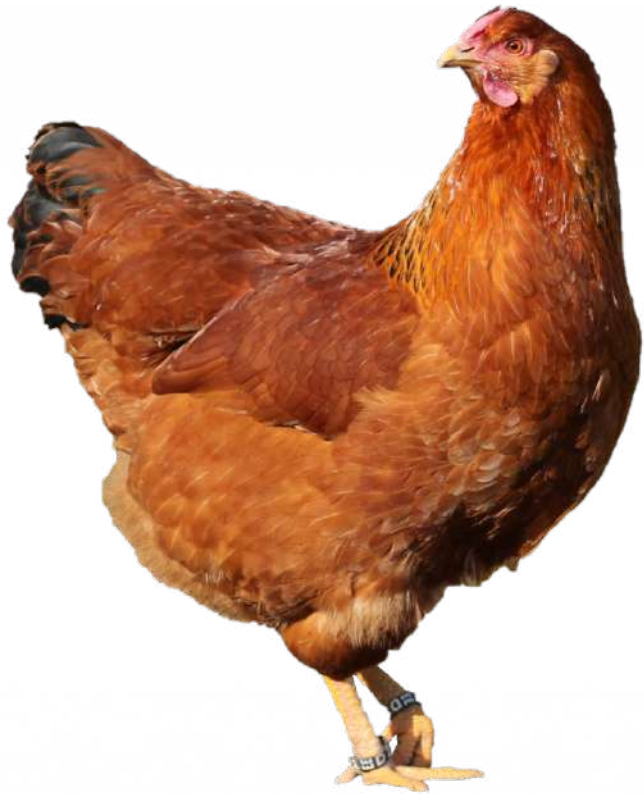
- Office
- Large Multi Family House
- Small Multi Family House
- Single Family House
- Building Stock

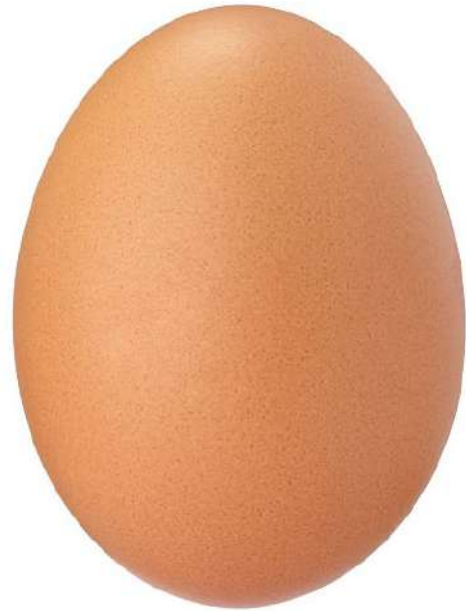




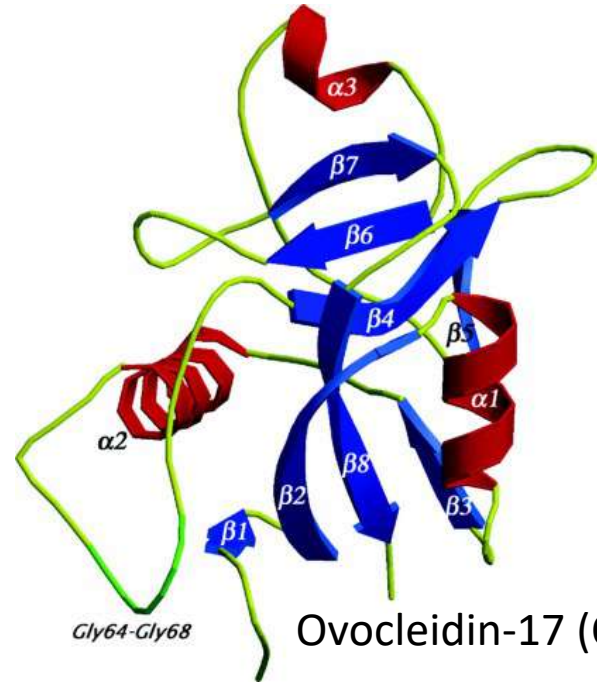
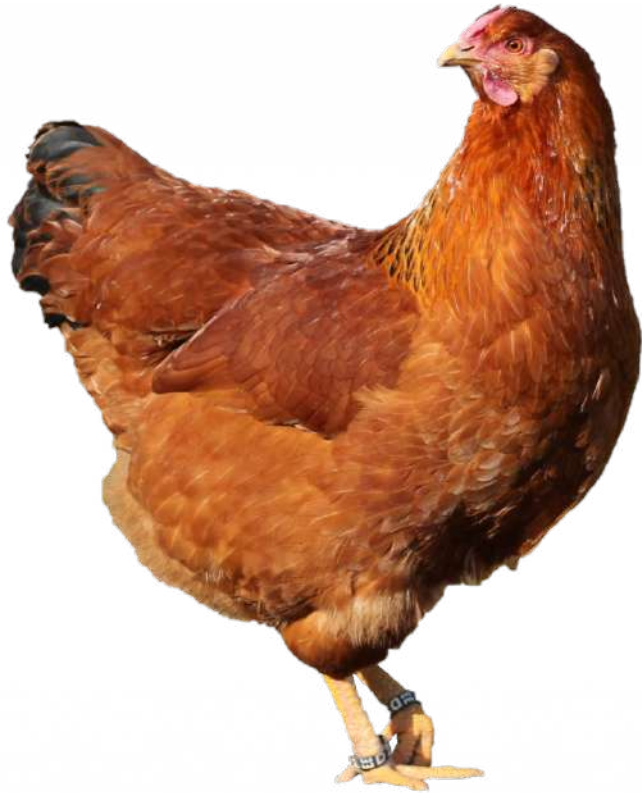












Ovocleidin-17 (OC-17)